



# reach DANE

Satellite Family Child Care System

## August 2023 Newsletter

A big welcome to our new Satellite Affiliate members, all with shared goal of achieving accreditation!

Melissa Rudack – Kids First Child Care Center

Marivic Chandik – Kids Place Family Child Care

Betty-Ann White – Small Steps – Great Expectations

Judith Cosme – Ohana – XV Family Daycare

**Congratulations on your Reaccreditation!**

Maria Elena Hernandez – Querubines Family Day Care

Valentina Aitken – Little Big Things

Terri Lynn Alexander – Pine Bough Child Care



**Congratulations on your first Accreditation!**

Sarah Cohen – Sarah's Littles



# LEARNING AND CONNECTING TOGETHER

## SPOTLIGHT ON

### Cedar Glade Family Learning Center

Program Owner: Jasmine Waldner, Affiliate Satellite Member

“Cedar Glade Family Learning Center is a nature play-based program that focuses on natural organic learning. We follow the children’s lead and incorporate the three Rs (reading, writing, and arithmetic) as well as social-emotional learning.

In our program books are everywhere, in every play and quiet space, whether inside or outdoors. We use both child and teacher interest choosing both fiction and nonfiction to fuel our learning. The children can then create, build and tinker to deepen their knowledge and apply what they’ve learned to new situations.

My journey in the ECE field has come full circle. I began this journey back in the 90s with my daughters and their cousins. In 2008, I fulfilled my dream of becoming an elementary/middle classroom teacher. After teaching 4<sup>th</sup> grade, I returned to the early childhood profession. ECE is where it all begins; the foundation for all that comes later.” – Jasmine Waldner, lead educator



“Providing a caring, nurturing, and loving home for the children in my program brings me joy.

Every photo has a story. Choosing just five was a challenge.” - Jasmine

## Risky Play

### Relevant Satellite Accreditation Standards

#### IV. Supporting Children's Development

B. The provider supports the development of positive self-esteem by helping children understand and appropriately express their feelings and needs.

4. The provider reacts calmly to children's needs for dependence and independence.

O. The provider helps children learn skills and habits that contribute to their safety.

1. The provider helps children learn to consider the safety implications of their actions and play.



### The Basics

**What is risky play?** Risky play is unstructured play that involves some risk of injury. Risky play typically involves children experimenting with height, speed, tools, and nature. This unique type of play helps children develop self-confidence and self-regulation skills by pushing boundaries and joining body and mind during challenging tasks. Children's risky play is an outlet for independence and an opportunity for learning!

**How can I keep children safe?** Allowing children to engage in risky play can be uncomfortable for many caregivers, especially ones that have been entrusted with the care of another's child. The risk of substantial injury is low when precautions are taken, including removing environmental hazards and matching the available equipment with the children's developmental level. Above all, adult supervision during risky play is an essential component of keeping children safe while supporting their growing independence. Adults provide necessary support bases for children engaging in risky play. You can help children foster an awareness of their surroundings by making comments that begin with, "Do you feel..." and "Notice how..." You can also help children problem solve during risky play by asking questions that begin with, "How will you...?" or "What can you use...?" This type of intervention can help build mutual respect and trust between children and caregivers.

### I want to learn more!

- [Position Statement on Active Outdoor Play](#)
- [What is the Relationship Between Risky Outdoor Play and Health in Children?](#)
- [Children's Risky Play from an Evolutionary Perspective: The Anti-Phobic Effects of Thrilling Experiences](#)
- [Eliminate Barriers to Risk Taking in Outdoor Play](#)
- [Risky Play and Children's Safety: Balancing Priorities for Optimal Child Development](#)

# PLANNING FOR RETIREMENT



**1.5 REGISTRY CREDIT  
IN ENGLISH AND SPANISH**

**Wednesday, September 13th  
6 - 7:30 p.m.  
Zoom**

*Understanding available plan options  
Recognizing importance of saving early  
Comprehending risk assessment*



Satellite Family Child Care System

**REGISTER HERE**



# Parade of Family Child Care Homes

reach  DANE

Satellite Family Child Care System  
4709 Verona Road Madison, WI

**Wednesday, October 4th, 2023**

**6:00 - 8:00 p.m.**

**2 Registry credits**

Sweet treats from 8:00 - 8:30 p.m.

*Register here*

## Satellite Professional Learning Calendar 2023

Dates	Time	Event	Location	Registration	Registry hours*
August 23	6-8 p.m.	Noche Latina	Satellite Office		
September 13	6-7:30 p.m.	Business Practice: Retirement Planning	Zoom	<a href="#">Register here!</a>	1.5
October 4	6-8:30 p.m.	Parade of Homes; Followed by resource event & dessert bar	Bus tour, Satellite office	<a href="#">Register here!</a>	2
November 4	9-5 p.m.	Safety Saturday	Satellite Office	<a href="#">Register here!</a>	8
November 15	6-7:30 p.m.	Family Child Care and Emergent Curriculum	Zoom	<a href="#">Register here!</a>	1.5

### Obtaining Registry Credit\* for Satellite's Virtual (Zoom) Professional Development Sessions

To receive Registry credit at the conclusion of virtual (Zoom) professional development, follow these steps:

1. Each participant must register individually even if viewing the training with other participants on the same screen.
2. You must be present for the entire session. Late arrivals may not be admitted.
3. At the conclusion of the session, you complete an evaluation and then enter your information to receive Registry credit. This must be completed at the end of the session or your professional development hours will not be entered into the Registry by Satellite Family Child Care System. \*\*

You can view and print your proof of attendance through your [Wisconsin Registry](#) account. It may take several weeks before your attendance is entered into the Registry. Certificates of completion will not be mailed or emailed to participants.

\*\*If you do not complete the steps above and wish to receive professional development credit for a Satellite event that you attended, you will need to complete the DCF form "Continuing Education Record—Independent Reading/Video Viewing " found here: <https://dcf.wisconsin.gov/clicensing/ccformspubs>

# LEARNING AND CONNECTING TOGETHER

## Do you have information to share with our community?

Submissions of the following are welcome:

- Photos and video of your program or an activity (be certain you have photo release forms on file)
- Program news
- Events connected with your program
- Celebration of educational milestones, like the completion of a degree or credential
- Awards received

Submit items for the newsletter to Laura Simkin: [lsimkin@reachdane.org](mailto:lsimkin@reachdane.org)

*Submissions may be edited and/or adjusted for length.*

## Welcome Rachel



Hi! My name is Rachel Halstead, and I am an Accreditation Consultant with Satellite. I have a degree in Education from the University of Wisconsin. I have been working in the Early Childhood field for over a decade in various roles, including classroom teacher and center director. I am excited to help family child care providers cultivate warm and enriching environments for the children they serve.

I am originally from Milwaukee but have lived in Madison for 15 years. When not working, I enjoy biking and exploring the outdoors with my partner and our toddler. I also enjoy seeing live music and going to local festivals.

# LEARNING AND CONNECTING TOGETHER

## LOAN EQUIPMENT AND CURRICULUM UNITS

Satellite members have full access to Satellite's equipment and curriculum units. Check the link below regularly to view our full lending options. When you sign up for equipment and units, your consultant will inform you of whether the item is available immediately or if you're on the waitlist.

Pick-up and drop-off of equipment and units occurs during consultant visits to your program. Additional exchanges of equipment and units may occur at the Satellite office. Communicate with your accreditation consultant to determine a day and time when Satellite staff are present.

### Satellite Equipment, Units and Book Loans

Balance Beam



Loom



Child's Armchair



Push Me – Pull Me



Little Rocker





# LEARNING AND CONNECTING TOGETHER

## NEW & UPDATED CURRICULUM UNITS

[Link to Unit and Equipment List](#)

Baking Unit



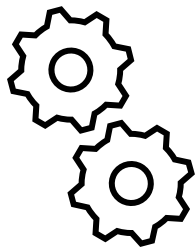
Loose Parts: Preschool/School Age Unit (Natural)



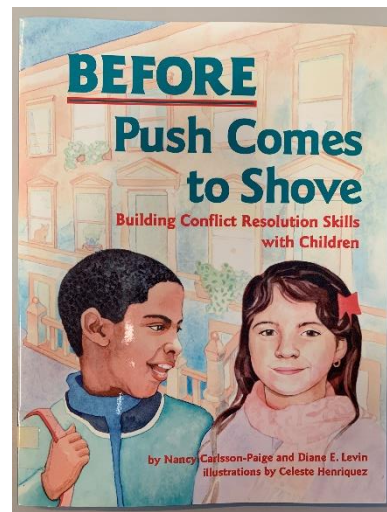
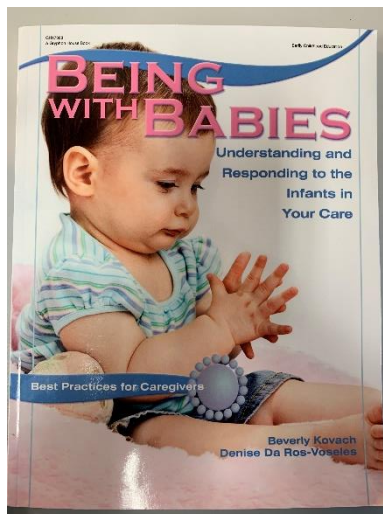
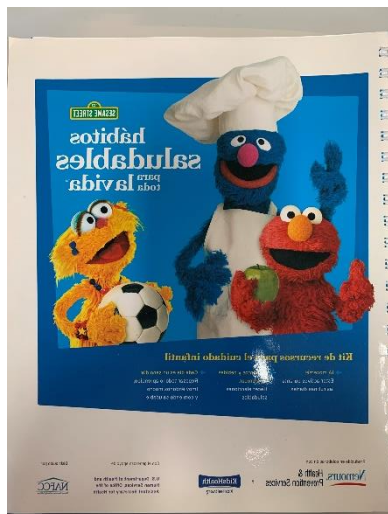
Music and Movement for Infants and Toddlers



Wheels and Axels Unit



# LEARNING AND CONNECTING TOGETHER



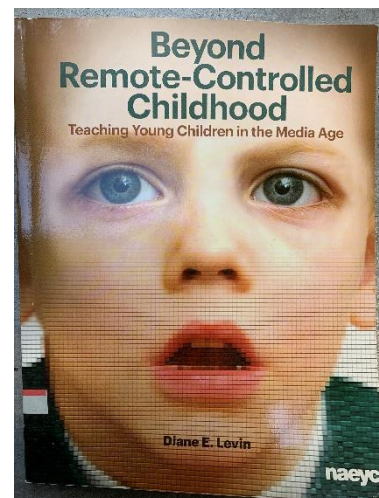
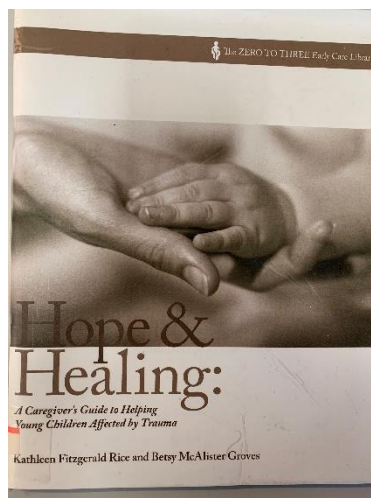
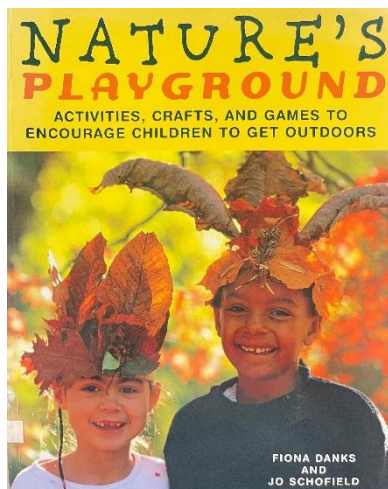
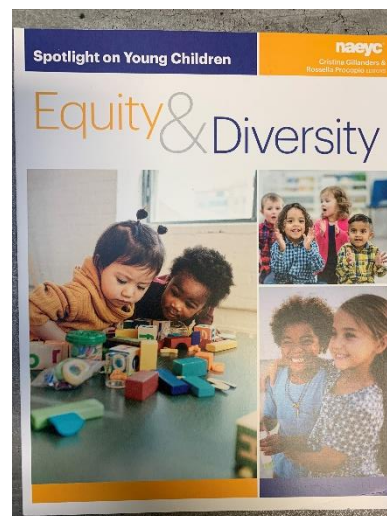
## EARLY CHILDHOOD EDUCATOR RESOURCE LIBRARY

100+ books

Satellite members have full access to Satellite's early childhood educator resource books. Check the link below to view our full lending options.

### Satellite Equipment, Units and Book Loans

When you choose a book, your consultant will inform you of whether the item is available immediately or if you're on the waiting list.



# FREE EARLY CHILDHOOD COURSES

CONTINUED SCHOLARSHIP FUNDING THROUGH THE WISCONSIN WORKFORCE INNOVATION GRANT ALLOWS THE FOLLOWING COURSES TO BE OFFERED FOR

**FREE** FALL SEMESTER OF 2023

SCHOLARSHIPS FOR STUDENTS WHO HAVE APPLIED TO ONE OF THE FOLLOWING

- > BASIC EARLY CHILDHOOD EDUCATOR
- > INFANT TODDLER CERTIFICATE
- > PRESCHOOL
- > CHILD CARE SERVICES
- > EARLY CHILDHOOD ASSOCIATE DEGREE

## LIST OF FREE COURSES

- > #31260 Health, Safety & Nutrition (Online/English)
- > #31237 Health, Safety & Nutrition (In-Person/English)
- > #31434 Health, Safety & Nutrition (Online/Bilingual)
- > #31110 Introductory Practicum\* (Online Discussion/English)
- > #31238 Introductory Practicum\* (In-Person Discussion/English)
- > #31433 Family & Community (In-Person/English)
- > #31236 Infant Toddler Development (Online/English)
- > #31262 Infant Toddler Development (In-Person/English)
- > #31768 Infant Toddler Development (Online/Bilingual)
- > #31244 Social Studies, Art & Music (Online/English)
- > #30873 Child Development (Online/English)
- > #33694 Health Safety and Nutrition (Online Live Watertown)
- > #33695 Social Studies, Art & Music (Online Live Watertown)

\*Scholarships for Intro to Practicum (31110 & 31238) are only available for ECE students finishing the Basic Early Childhood Educator Program. This course will no longer be required as part of the Basic Early Childhood Educator for students who started the program Fall 2023

FILL OUT THE SCHOLARSHIP FORM



This project is being supported in part by federal award number SLFRP0135 awarded to Madison College via the Wisconsin Workforce Innovation Grant Program by the U.S. Department of the Treasury

EMILY PINK: [epink@madisoncollege.edu](mailto:epink@madisoncollege.edu)

ERIN TRONDSON: [etronson@madisoncollege.edu](mailto:etronson@madisoncollege.edu)



**MADISON**  
AREA | TECHNICAL  
COLLEGE



## Eco-Healthy Child Care – Protecting Children’s Environmental Health

*This course is fun, educational, and captivating. Learn why children are uniquely vulnerable to common environmental health hazards found in the early learning environment (e.g., lead, pesticides, household chemicals, unsafe plastics), and receive practical and no-to-low cost strategies for preventing children’s exposures to toxins. With engaging interactions offered throughout, this course is designed for child care providers, as well as directors, administrators and those who offer technical assistance and/or training to early care and learning professionals.*

🌐 English, Spanish

3 hours

\$ Free (Use code **TrainEco22**)

## Professional Resources

### Satellite Services

- [Mentor Program](#)
- [Satellite new member application](#)
- [Resource loans—equipment, curriculum units, & resource books](#)



### Wisconsin

- [T.E.A.C.H. Scholarship Program](#)
- [REWARD Stipend Program](#)
- [Wisconsin Early Childhood Shared Services Network \(WEESN\)](#)
- [The Wisconsin Registry](#)
- [Educator Assistance Program](#)
- [Child Care Forms and Publications \(Licensing\)](#)
- [YoungStar Connect](#)



### Professional Organizations focused only on Family Child Care

- [Wisconsin Family Child Care Association](#)
- [Home Grown](#)
- [National Association for Family Child Care](#)



### The August Financial Wellness session is:

**You've Got Home Equity: Reasons to Use It!** From home improvements to paying off higher interest debt, there are many ways to use a Home Equity Loan or Home Equity Line of Credit. Learn how you can use the equity in your home to make things happen that have been top of mind. Get familiar with important financial terms, how home equity loans work, common uses, the application process, and other helpful resources.

Live Session: 08/16 @ 11:30 AM [Link to Register!](#)

(Use "Reach Dane" as the organization with whom you're affiliated)

# SUPPORT GROUPS

## Join the Community

### Satellite Family Child Care Circle

*A virtual space for Satellite family child care providers to connect, learn, and share. This group is only for providers affiliated with Satellite Family Child Care System. We want this to be your space to share ideas, photos, activities, and more!*



For more information, please contact:



**Grace Eilers**

[geilers@reachdane.org](mailto:geilers@reachdane.org)

(608) 400-2823

### Noche Latina

*A monthly event for Spanish speaking, Satellite affiliated family child care providers and their families held at Satellite's office. Noche Latina focuses on building a network of supportive relationships among Latina providers and their families. We also have a lot of fun!*

For more information, please contact:



**Estella Vargas**

[evargas@reachdane.org](mailto:evargas@reachdane.org)

(608) 852-7724



# SUPPORT GROUPS

Satellite believes in the power of community, here are groups that are affiliated with us and filled with our providers that can help connect you together. Participation in all support groups is a benefit of Satellite and completely voluntary.

## Arcoíris

*The purpose of the Arcoíris support group is to provide meetings with child care providers. The goal of the Arcoíris support group is to share resources with each provider who attends the meetings. There is no cost to the Arcoíris support group for providers who want to attend. And the meetings are the third Friday of every month, from 6:30-8:30pm. Meetings are usually at a provider's home, but can also be at a restaurant, park, library, etc. For the meeting, each provider is invited to bring a dish, dessert, or drink to share. During the meeting, the food that has been provided is shared. Ideas, resources, situations are also shared and new providers who are attending the meeting are introduced. The Arcoíris support group maintains confidentiality inside and outside the meetings of all topics discussed.*

For more information, please contact:

Margarita Ugalde

[ugaldemargarita7@gmail.com](mailto:ugaldemargarita7@gmail.com)

## Sojourn

*Sojourn is a community of accredited family child care professionals who empower one another to reach their own unique potential through person connections, reflective process, and shared leadership. We strive for a balance between personal and professional issues in our discussions. We use a shared leadership model for Sojourn meetings which allows each member to grow and participate in various roles. Join Sojourn to build relationships with other professional child care providers, experience professional growth through group process responsibilities, and participate in discussion about family child care issues.*

For more information, please contact:

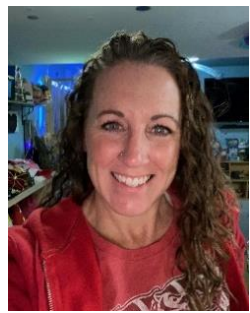


**Shannon Davis**  
[badgerclan2@gmail.com](mailto:badgerclan2@gmail.com)



**Chris Torres**  
[rctorres8881@gmail.com](mailto:rctorres8881@gmail.com)

# SATELLITE ADVISORY COMMITTEE



*Shannon Davis*

Advisory Committee Member  
Accredited Family Child Care Provider

*Mykenzie Lemberger*

Advisory Committee Secretary  
Satellite Consultant  
(608) 843-5378  
[mlemberger@reachdane.org](mailto:mlemberger@reachdane.org)



*Jammy Ocampo*

Advisory Committee Member  
Community Member with the  
Madison Public Library  
Former Satellite parent



*Fernanda Leporace*

Advisory Committee Member  
Community Member with  
WECA  
Former Accredited Provider

## Satellite Advisory Committee

Satellite deeply values input from those within the family child care community.

At each Advisory Committee meeting, the facilitator presents information about Satellite's support services and/or accreditation and then asks committee members related open-ended questions. Committee members are encouraged to use their unique backgrounds, personal and professional roles, and experiences as they share their perceptions and ideas.

Satellite's facilitator actively listens with the goal of utilizing committee members' expertise and experiences to strengthen the Satellite Family Child Care System.



*Nancy Rosales*

Advisory Committee Member  
Accredited Family Child Care Provider

*Laura Simkin*

Advisory Committee Facilitator  
Satellite Associate Director  
(608) 381-2676  
[lsimkin@reachdane.org](mailto:lsimkin@reachdane.org)



*Terri Lynn Alexander*

Advisory Committee Member  
Accredited Family Child Care Provider

*Abby Abrisham*

Advisory Committee Member  
Retired Satellite Accredited  
Family Child Care Provider



*Maria Luisa Mas*

Advisory Committee Member  
Accredited Family Child Care Provider



# SATELLITE STAFF



*Alison Joseph*

Accreditation Consultant  
(608) 416-3996  
[ajoseph@reachdane.org](mailto:ajoseph@reachdane.org)



*Amy Christianson*

Language Access, Curriculum, and  
Satellite Director  
[achristianson@reachdane.org](mailto:achristianson@reachdane.org)



*Estella Vargas*

Accreditation Consultant  
Bilingual (Spanish/English)  
(608) 852-7724  
[evargas@reachdane.org](mailto:evargas@reachdane.org)



*Laura Simkin*

Satellite Associate Director  
(608) 381-2676  
[lsimkin@reachdane.org](mailto:lsimkin@reachdane.org)  
*Contact Laura with all general questions  
related to accreditation and Satellite services.*



*Jen Jorgensen*

Accreditation Consultant  
(608) 416-9531  
[jjorgensen@reachdane.org](mailto:jjorgensen@reachdane.org)



*Grace Eilers*

Family Child Care Content Specialist  
(608) 400-2823  
[geilers@reachdane.org](mailto:geilers@reachdane.org)



*Rachel Halstead*

Accreditation Consultant  
(608) 690-0174  
[rhalstead@reachdane.org](mailto:rhalstead@reachdane.org)



*Mykenzie Lemberger*

Accreditation Consultant  
(608) 843-5378  
[mlemberger@reachdane.org](mailto:mlemberger@reachdane.org)

## CONFIDENTIALITY

Satellite staff keep confidential within Satellite your program's information that you share with your accreditation consultant, the Satellite director and the Satellite manager. This information is documented in records of contact that only Satellite's staff access. Satellite's team works together, harnessing our collective skills and knowledge to support your program.

Need assistance? Contact us so we can help!

Satellite  
(608) 275-6740

[satellitefcc@reachdane.org](mailto:satellitefcc@reachdane.org)

Mailing and drop-off address:  
2096 Red Arrow Trail, Fitchburg, WI 53711

*Label mailed and dropped off items with "attention:  
Satellite" & and the Satellite staff person's name*